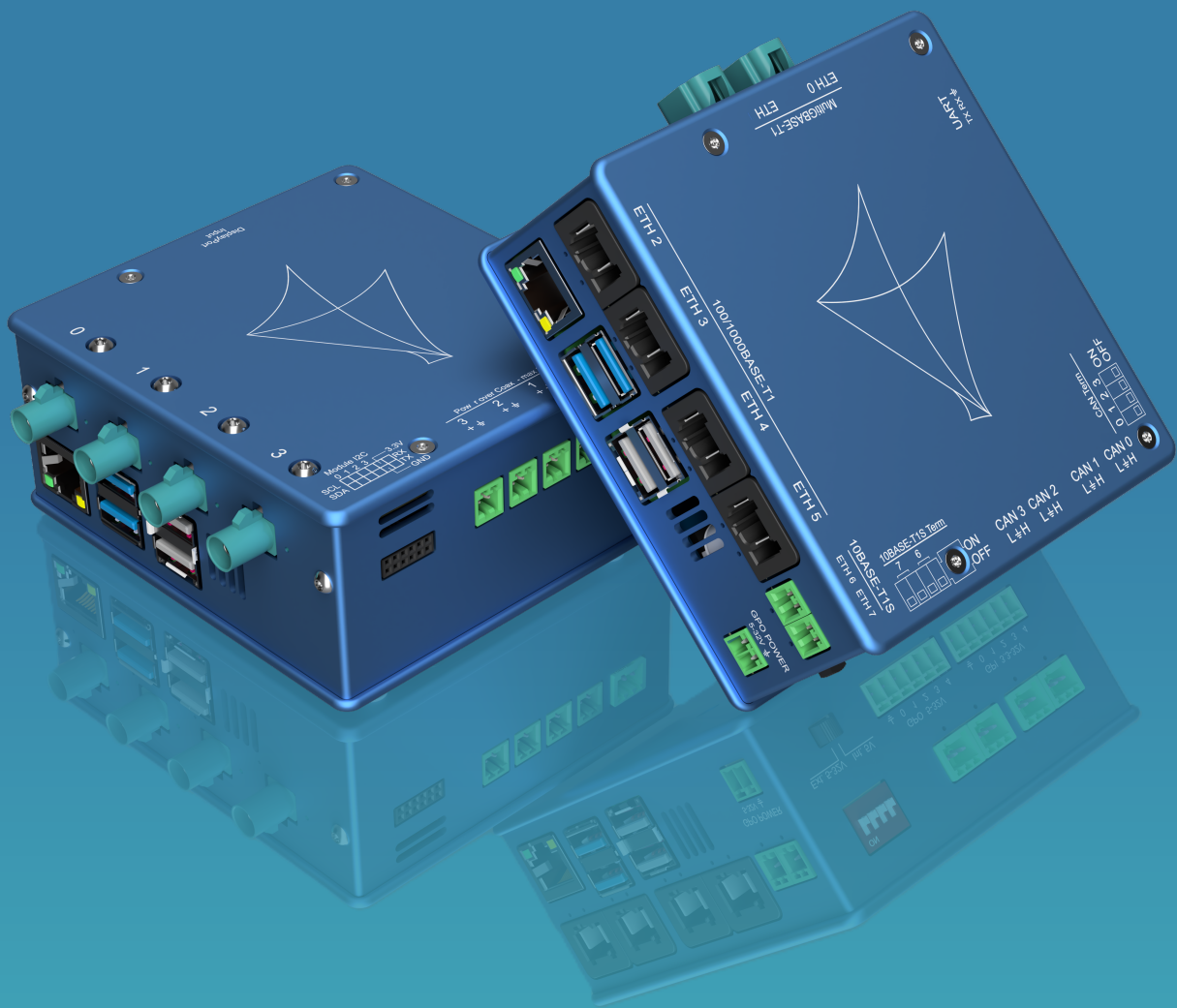




embicas

Video | Network | Interfaces
Simple by intention.



VID.EX | NET.EX

Automotive Video |
Network Extension for
the Raspberry Pi 5.

VID.EX

Bringing automotive video interfaces to the Pi – view or stream any media

All common video links supported

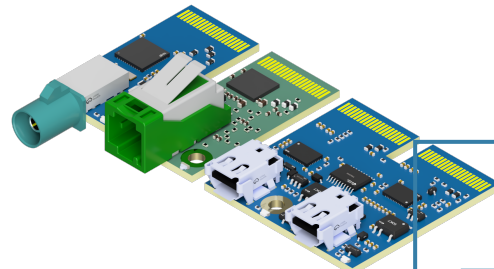
- GMSL
- FPD-Link
- Native DisplayPort (source & sink)
- And many more: visit www.embicas.com for a complete list

Modular interface concept

- CSI2/DPHY: 4 lanes, up to 2.4Gbps, RX/TX
- DisplayPort 1.4: 2 lanes
- GPIO, I2C

Raspberry Pi 5

- ARM Cortex-A76 QuadCore
- VideoCore VII GPU
- Up to 16GB LPDDR4X RAM
- Access to interfaces via Video for Linux 2 (V4L2) drivers
- Boost your development with available open source projects and Linux community
- Check our codebase at: github.com/orgs/embicas GmbH/

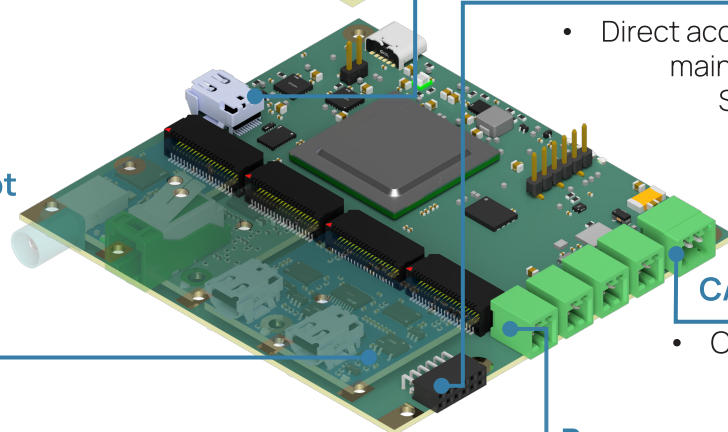


DisplayPort

- Video input

I2C & UART

- Direct access to main I2C of SerDes



CAN FD

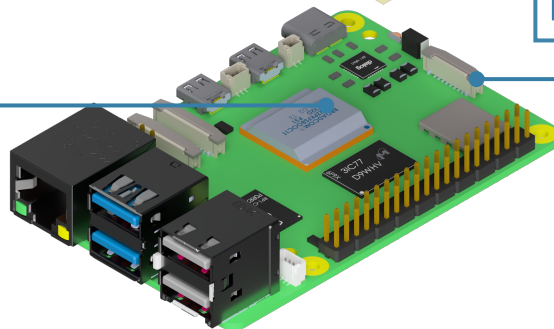
- Control bus

Power over Coax

- PoC in/out for each module

PCIe Gen3

- connection between Raspberry Pi and VID.EX main board



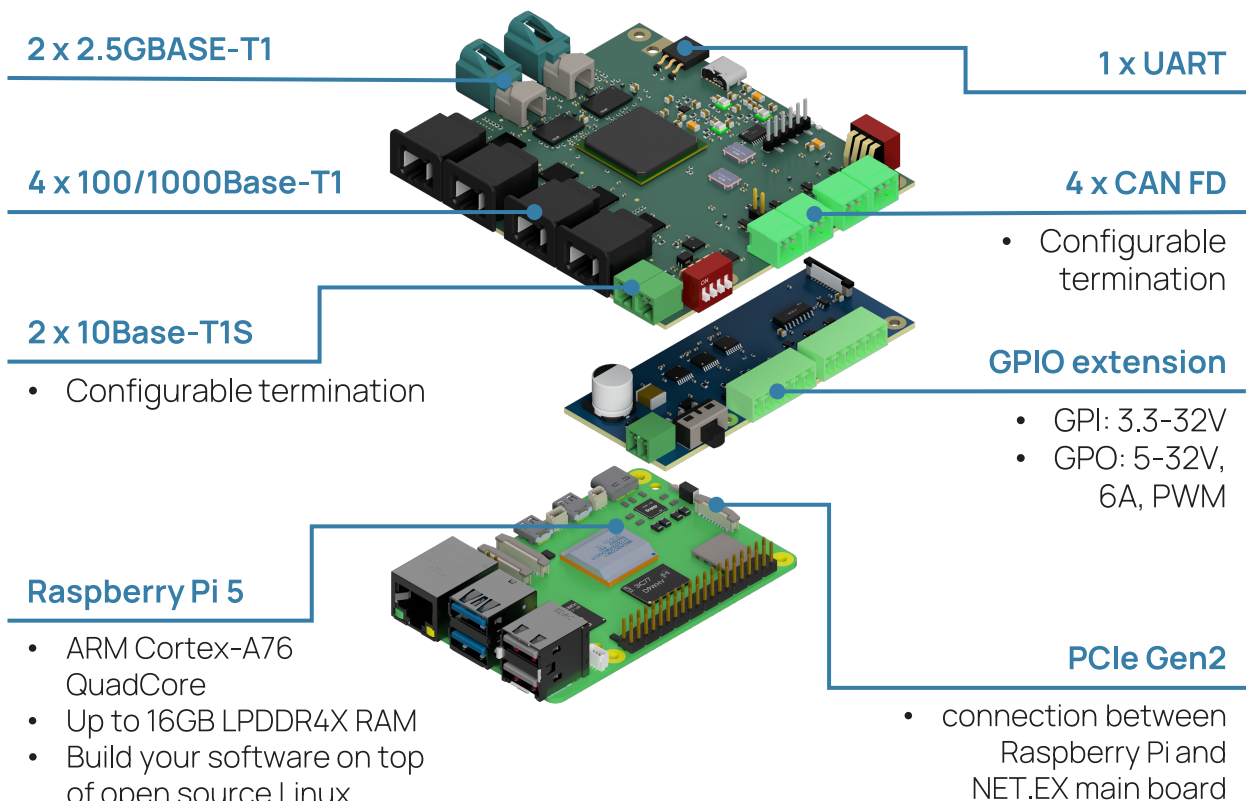
Applications

- Frame grabber and generator
- Camera emulation
- ECU & display testing
- Flexible DisplayPort generator and analyzer
- Production testing
- Universal tool for a developers desk

VID.EX facts

- Dimensions with housing: 102mm (W) x 93mm (D) x 46mm (H)
- Power supply: single 5V

Enabling automotive networking with the Pi – leverage the speed of open source



Applications

- All-in one solution for standard ECU interfaces
- Media converter
- Hardware-in-the loop
- ECU emulator
- Bridging different Ethernet/CAN standards
- Switch
- Production testing
- Universal tool for a developers desk

NET.EX facts

- Dimensions with housing: 102mm (W) x 93mm (D) x 46mm (H)
- Power supply: single 5V



Engineering Systems with Intention.

FPGA | PCB | Embedded | Software

**Missing an interface? Need customization?
Contact us!**



Schönbrunner Straße 225/4
1120 Vienna, Austria



www.embicas.com



sales@embicas.com